



Gold
Microsoft Partner

Apptimized Workspace Welcome Guide

STEP 1

Create a project and define workflow

To organize a workspace, **create the first Project** and choose workflow steps. If you don't have your own installation documentation, as a first step choose Discovery, and only after that choose Packaging and Testing steps as well.

Construct your project workflow

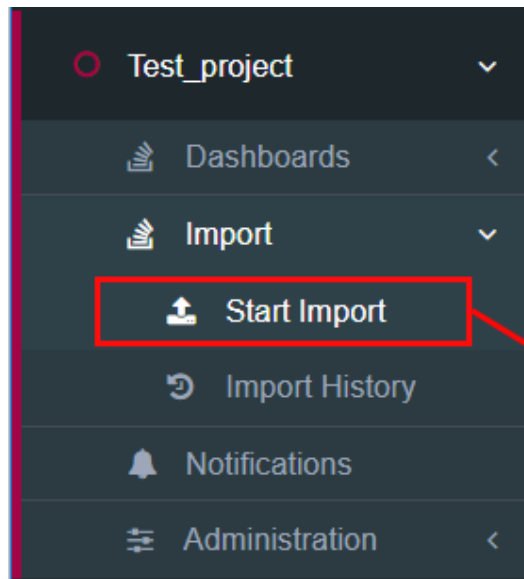
Create your project workflow. Drag and Drop workflow modules from "Pick a module" box to the workflow step. Or create new step by clicking "Add step" button.

The screenshot illustrates the workflow construction process. On the left, a panel titled "Pick a module" lists six options, each with a grid icon and a question mark: "Discovery — Self Service", "Discovery — Factory Service", "Packaging — Self Service", "Packaging — Factory Service", "Testing — Self Service", and "Testing — Factory Service". A double-headed arrow points to the right panel, "New project workflow", which features an "Add step" button in the top right. The workflow is currently empty, showing three columns: "Import", "New step 1", and "Download". The "Import" column contains four modules: "Classic import", "Import from ...", "SCCM Import (Comes as addition)", and "Catalogue & ... (Comes as addition)". The "New step 1" column has a dashed blue box with the text "Drag&Drop modules from left panel here." The "Download" column contains a single "Download" module.

STEP 2

Add application to your project

IMPORT application from computer / Internet, CSV file, SCCM. Upload an installation document or create it under Discovery step



Import types

Select Import type for import application to the project



Classic import

Upload one or multiple files from your local computer or load directly from the Internet.



Import from CSV file

By using a CSV file, you can import large numbers of files and their details at a time.

STEP 3

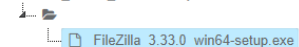
Check application Meta Data

Apptimized automatically extracts metadata from the following files: exe, msi, msix, msixbundle, appx, appxbundle. Add prerequisites to an application and relations, if needed.

2. Metadata

Select the main installer to extract its name and version information automatically from the list of files below, or enter the data into the fields to the right manually.

FileZilla_3.33.0_win64-setup.exe



Add prerequisites

AppID

4

Reference

Vendor*

Tim Kosse

Available vendors: Tim Kosse

Software*

FileZilla

Available software: FileZilla

Version*

3.33.0

Language*

English (United States)

Available languages: English (United States)

Previous version of application

None, it is the first version of application in portfolio

Finish

STEP 4

Choose next step

A Transition screen for the application appears where the Workflow scheme and modalities for interaction with the application (namely discovery, packaging, testing) are available.

Workflow scheme Toggle workflow scheme

Import **Discovery** Packaging Testing Download

Transition screen

Congratulations, you have successfully completed Import module.

For Discovery you can do:

Discovery — Self Service ?
Click to select this module

For Packaging you can do:

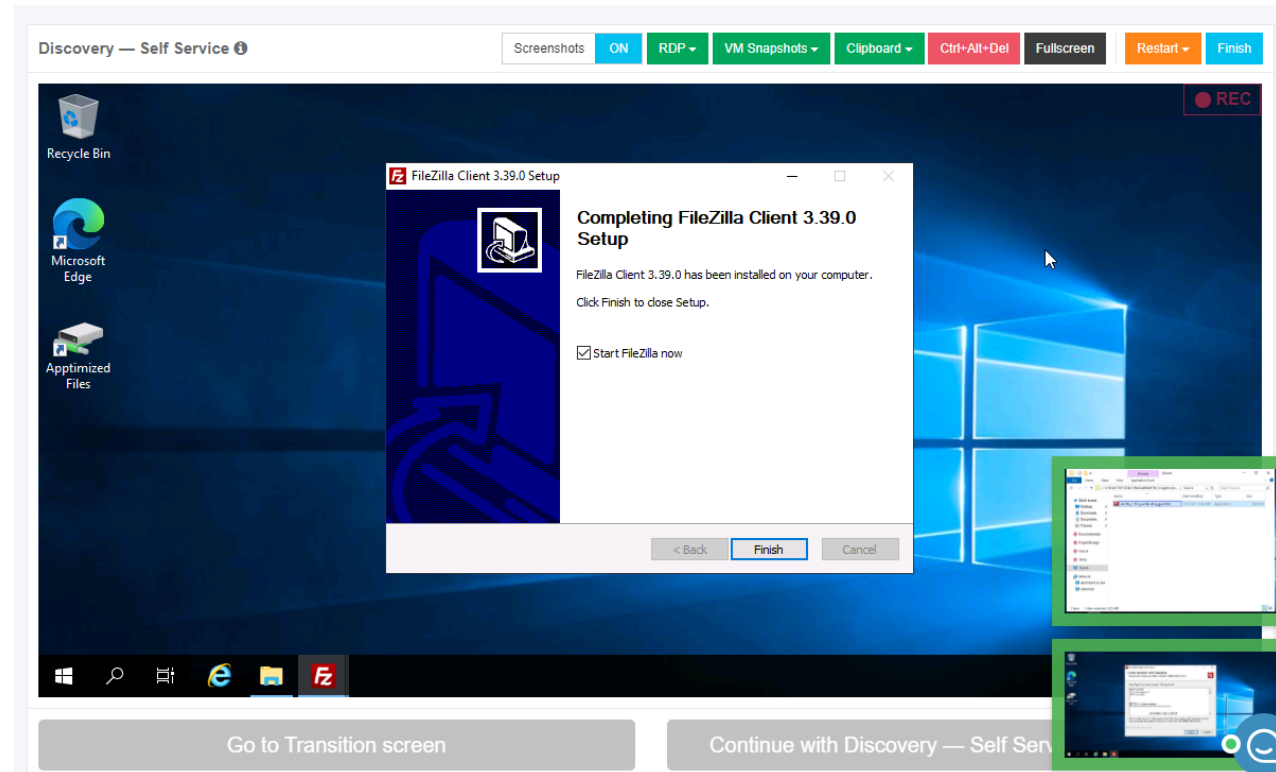
Packaging — Self Service ?
Click to select this module

Skip to Testing

STEP 5

Create installation documentation under clean VM

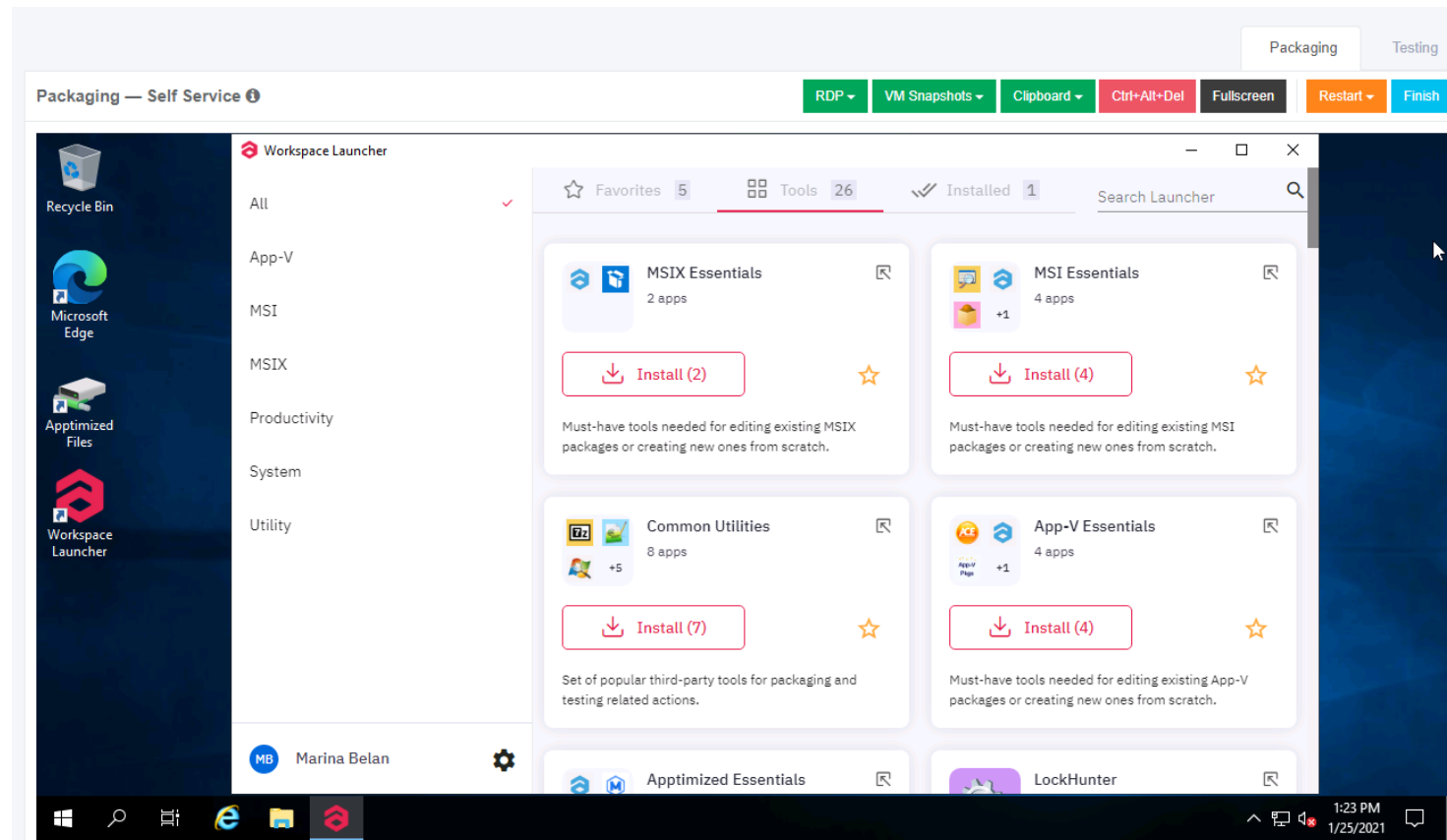
Record a guide to install and configure the application on Apptimized VMs. All actions are automatically captured as step-by-step screenshots and further described in textual format automatically. Before sending a document (which is available in PDF and HTML formats) to Apptimized, change the scenario (i.e., to swap screenshots, to edit comments for each screenshot or to delete unnecessary screenshots).



STEP 6

Create package

Package application in .msi, .msix, .app-v, .intunewin or .vsl format with help of Workspace Launcher toolset. All applications are in the uninstalled state by default. Choose your format, download the bundle, and **start the packaging process**. More information about Packaging you can find in the [User manual](#)



STEP 7

Test package

It is a best-practice to **test the package** before deploying it to the machine. Performed test cases would be converted into a document: comment it and provides debugging guidance for the packager.

Testing Documentation

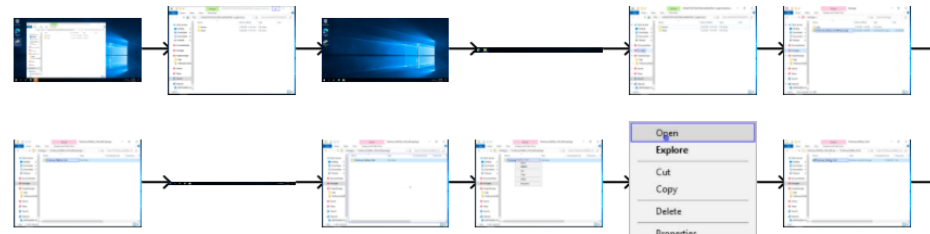
Testing results	
Result	Success
Optional comment	

Software Information	
Software Vendor	Tim Kosse
Software Name	FileZilla
Software Version	3.39.0
Software Language	English (United States)
Testing Platform	Windows 10 64-bit EN (1809)

Project Information	
Project Name	Test
Project Description	

User Information	
Name	Marina Belan
Email	m.belan@apptimized.com

Screenshots




STEP 8

Download package



Download all your deliverables from the workflow: installation documentation, ready to deploy packages, and testing materials.

Download


Import

 Download installation source FileZilla_3.39.0_win64-setup_bundled.exe / 8.25 MB



Discovery — Self Service

 Download generated discovery HTML document TimKosse_Fil...  Download generated discovery PDF document TimKosse_Fil...

Packaging — Self Service

 Download package TimKosse_FileZilla_3.39.0_MSI.package.zip / 21.32 MB

Testing — Self Service

 Download generated testing HTML document TimKosse_FileZ...  Download generated testing PDF document TimKosse_FileZill...

Please rate your ★★★★★
Apptimized experience